

Saturday, February 21, 2026

**Madison High School
David Edwards Memorial Athletic Center**

**A TECA Sanctioned Contest
hosted by the
Madison High School Band/Flag Booster Club
and the Madison Band and Color Guard**



CONTACT: Wesley Perkins (210) 347- 5712 wperki@neisd.net

Madison High School Contest Information

1. Location, Directions and Map to Drumline and Winter Guard Competition:

Madison High School - David Edwards Memorial Athletic Complex (DEMAC)
5005 Stahl Road
San Antonio, TX 78247

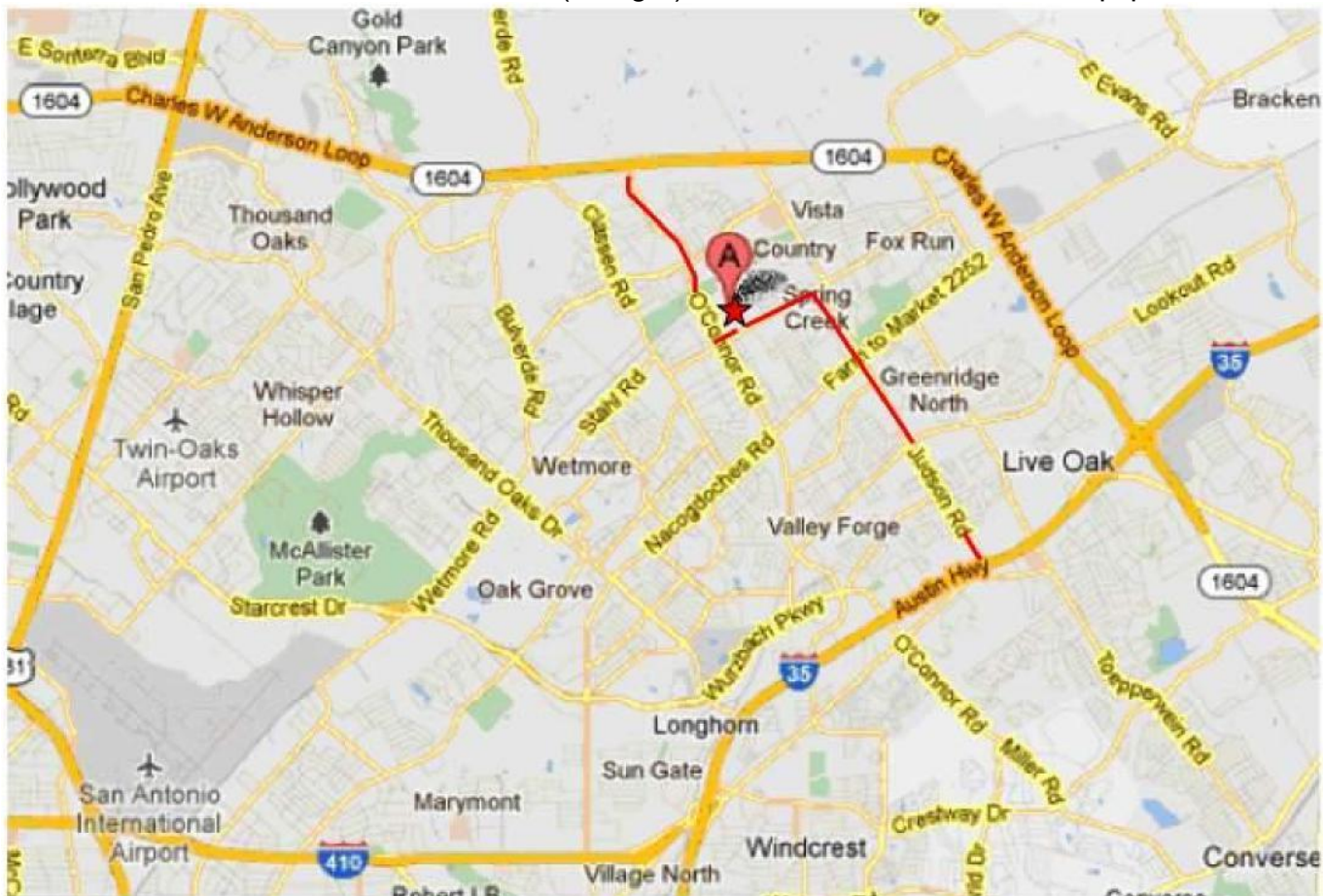
- Madison is located at the intersection of O'Connor & Stahl Road between IH-35 & Loop 1604.
- From Loop 1604, the easiest route is O'Connor Rd.
- From IH-35, the straightest route (and often least congested) is Judson Road.

From IH-10 West (Boerne, San Angelo, etc.):

- Take Exit 556A to merge onto TX-1604 Loop East
- Drive 12.4 miles and exit O'Connor Rd.
- Turn Right on O'Connor Rd.
- Drive 1.8 miles to arrive at Madison (on left)
- Turn left onto Stahl Rd. to check in unit and unload equipment

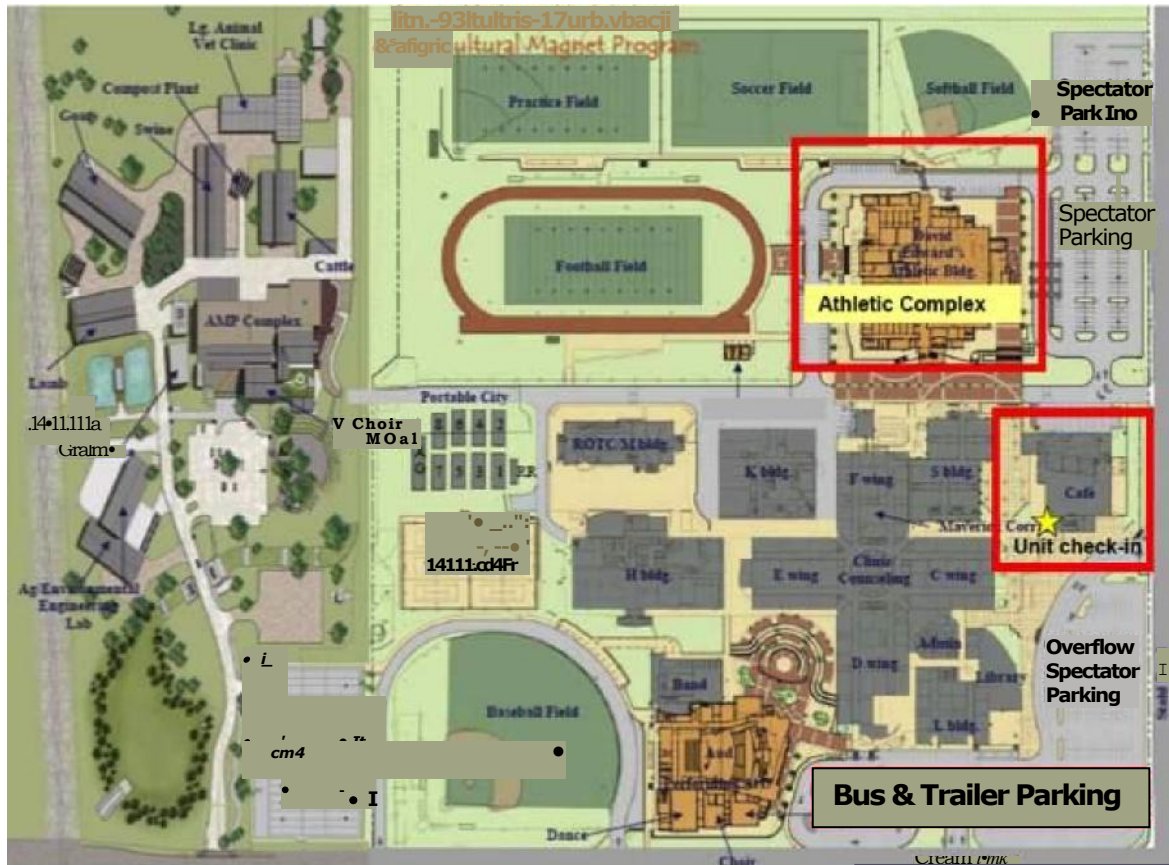
From IH-35

- Exit Judson Road and proceed North (toward Sam's Club) on Judson Road
- Drive 2.8 miles then turn left onto Stahl Rd.
- Arrive at Madison in .9 miles (on right) to check in unit and unload equipment

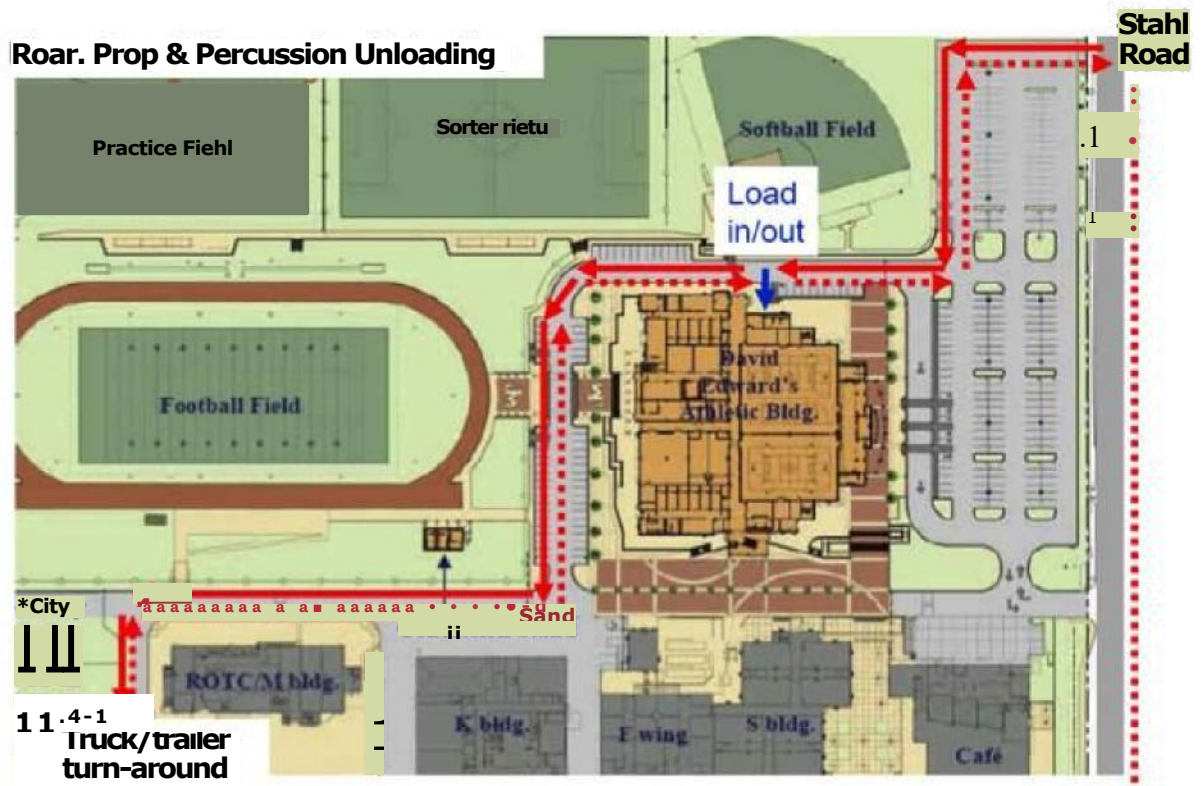


See maps on following pages for parking, unit check-in and equipment information.

CAMPUS MAP



EQUIPMENT TRUCK ROUTE



to parking after unloading

2. Contest Flow

All contest rules and regulations from the 2026 TECA Constitution and By-Laws and 2026 WGI Rule Books will be followed.

Parking

Parking in front of DEMAC is reserved for spectators. Overflow spectator parking is in front of the cafeteria.

- Equipment trucks (floors and props) will be unloaded at DEMAC where these items will be stored. After unloading floors and props, equipment trucks should park in the lot closest to the intersection of O'Connor and Stahl.
- Buses should unload curbside at the cafeteria for unit check-in, then should park at the lot closest to the intersection of O'Connor and Stahl.

Check-in

The check-in table will be located at the cafeteria entrance. Performing members must check in prior to warm-up. Performing members will get hand stamped.

- Equipment - At check-in, performers must show the check-in representative that equipment is appropriately padded and taped. Maps of the school and performance times will be available.
- Guard, Crew and Staff Admission – Admission will be given to performers and up to 10 student crew members. Any additional crew members will be charged \$3 per person.

Cafeteria Area / Color Guard Area

Each unit will have a designated area to store personal items. Concessions will be available both in the cafeteria and in the Athletic Complex. No outside food or drink is allowed in the high school.

Students and Staff may not spin, toss, or maneuver equipment inside any of the buildings at any time other than in designated areas.

You may use the area between the cafeteria and the Athletic Complex for extra equipment warm-up.

Performance (Body Warm-up, Equipment Warm-up, and Performance Notes)

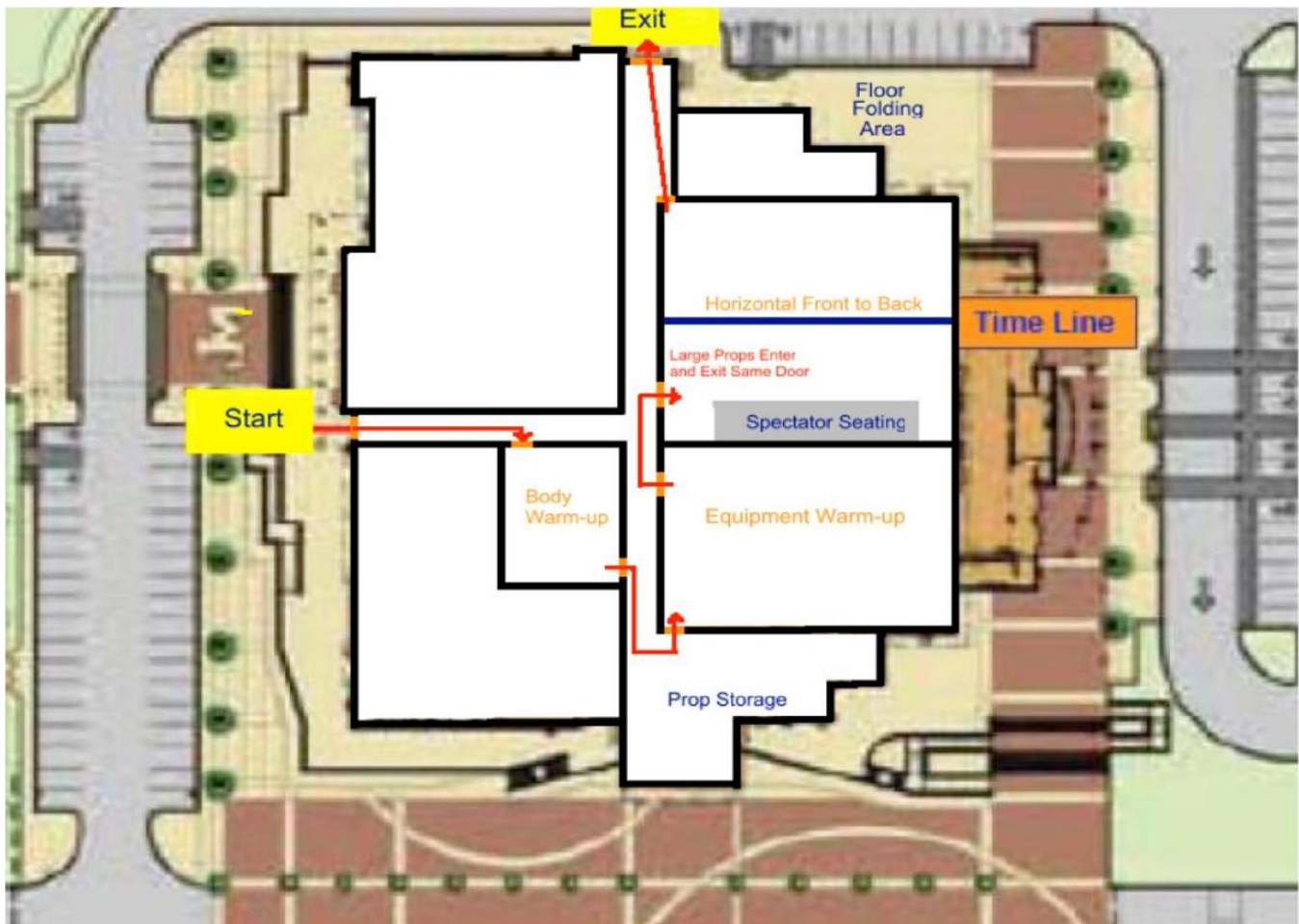
- **Ready** – When it is time for your group to be ready, report to the Ready table at the rear of the Athletic Complex (see map next page “Start”). Equipment and props will be double-checked for appropriate taping for protection of the gymnasium floors.
- **Body Warm-Up** – From the Ready table, students will proceed to body warm-up. Students may stretch or do a run through of body mechanics. No equipment will be utilized during the body warm-up segment of the official warm-up time. A sound system will be available.
- **Equipment Warm-Up** – From Body Warm-Up, students will proceed to equipment warm-up. The group will be in a holding area until the Equipment Warm-Up time starts. A sound system will be available.

- **Performance** - After Equipment Warm-Up, students will be led to the performance area. The group will be in a holding area until the official set-up and performance time starts.

We will be using a **Horizontal Center Line Flow** for the Performance Area.

Drumlines: Units will warm-up on the surface behind the Athletic Complex and will be directed to the performance gymnasium.

Guards: Units will enter from the area closest to Equipment Warm-Up and will exit on the opposite side. Large Props must enter and exit through the same doors. Entering groups will be held back until all exiting props have cleared the doorway.



Post Performance

After you exit the performance area, staff members should make sure that equipment is put away. Guards will be directed to a floor-folding area. Please fold floors quickly and exit the area to prevent a "traffic jam."

Retreat

Captains will line up in the warm-up gym after the last performance. Retreat should begin promptly at the conclusion.

Critique

There will not be a critique at this show.

3. Admission (Spectators)

Students - \$8.00 (children under 5 free)

Adults - \$10.00

4. Concessions

Concessions will be available throughout the contest, outside food or drink will not be allowed inside the school. Performing groups can pre-order hot dog or hamburger combo meals by [emailing madisonbandflagboosters@gmail.com](mailto:madisonbandflagboosters@gmail.com) with your order, we will accept check, credit card and cash. We will not accept pre-orders after 12pm February 9th, 2026. Other items for sell during event include:

Hotdog/Chips/Drink \$8	Pretzels \$5	Hot Chocolate \$3
Hamburger/Chips/Drink \$10	Cucumbers/Tajin/Chamoy \$3	Pickles \$3
Crepes \$13	Nachos \$4	Assorted Chocolates \$3
Mini Pancakes \$5	Cheetos w/Cheese \$4	Assorted Candies \$3
Popcorn/Drink \$5	Frito Pie \$4	

5. Air-grams and Flowers

There will be booths selling miscellaneous items. Good luck air-grams and congratulatory flowers will be available for purchase, as well as a festival t-shirt listing participating groups and a festival patch. The cost for air-grams will be \$5.. The cost for flowers is \$8.00

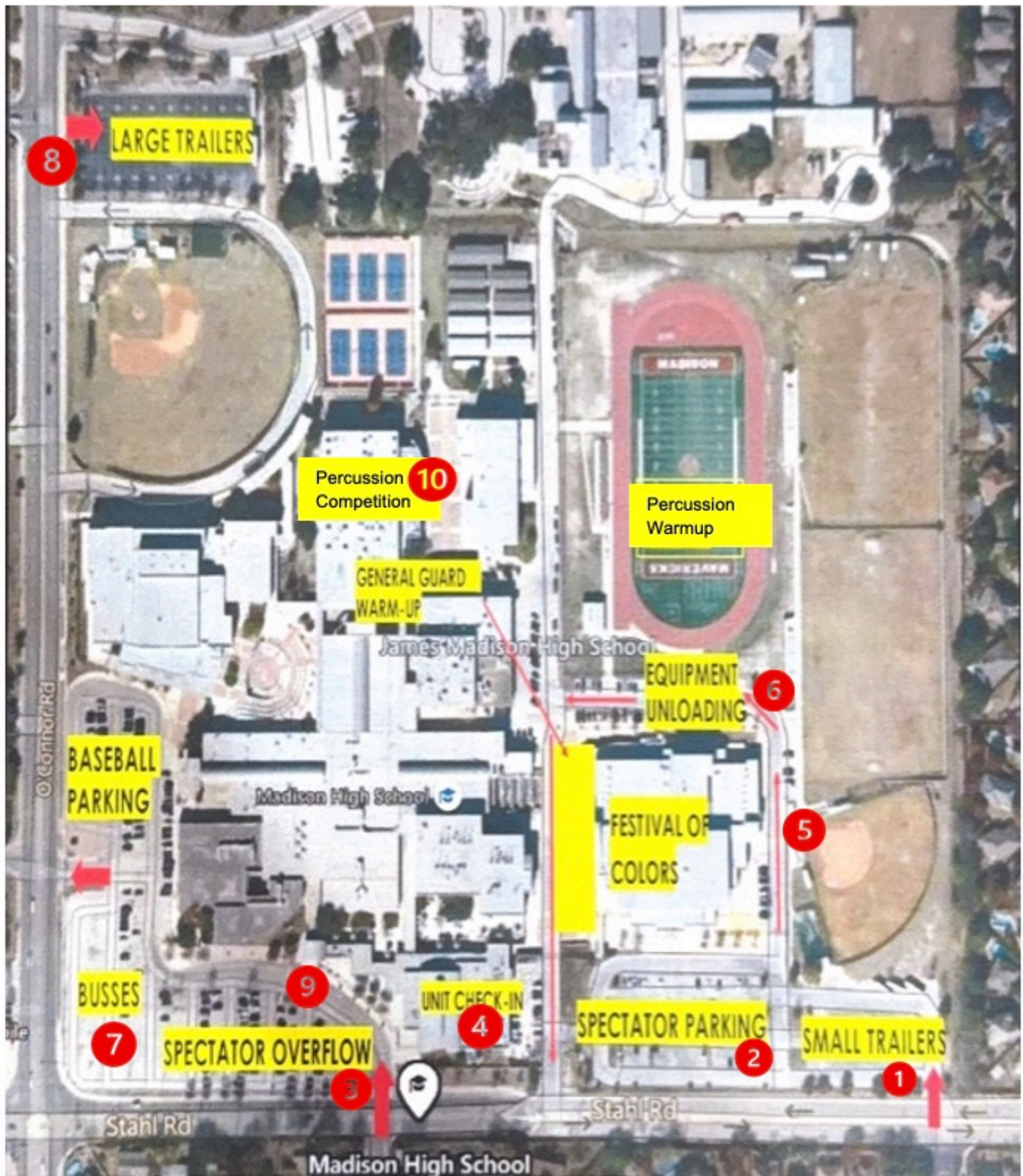
6. Weather policy. Activities are all in doors.

7. Online help and information

Online information and help are available via the TECA website at <http://www.go-teca.org> .

We look forward to seeing you at Madison High School!

Parking Lot Close Ups





#	Description
Signage #1	Small Trailer Parking.
Signage #2 and #3	Spectator Parking.
Signage #4	Colorguard Unit Check in.
Signage #5	Floor Unloading.
Signage #6	Show Equipment Unloading.
Signage #7	Bus Parking.
Signage #8	Show Large Trailer Parking.
Signage #9	Spectator Parking.
Signage #10	Percussion Unit Check In